

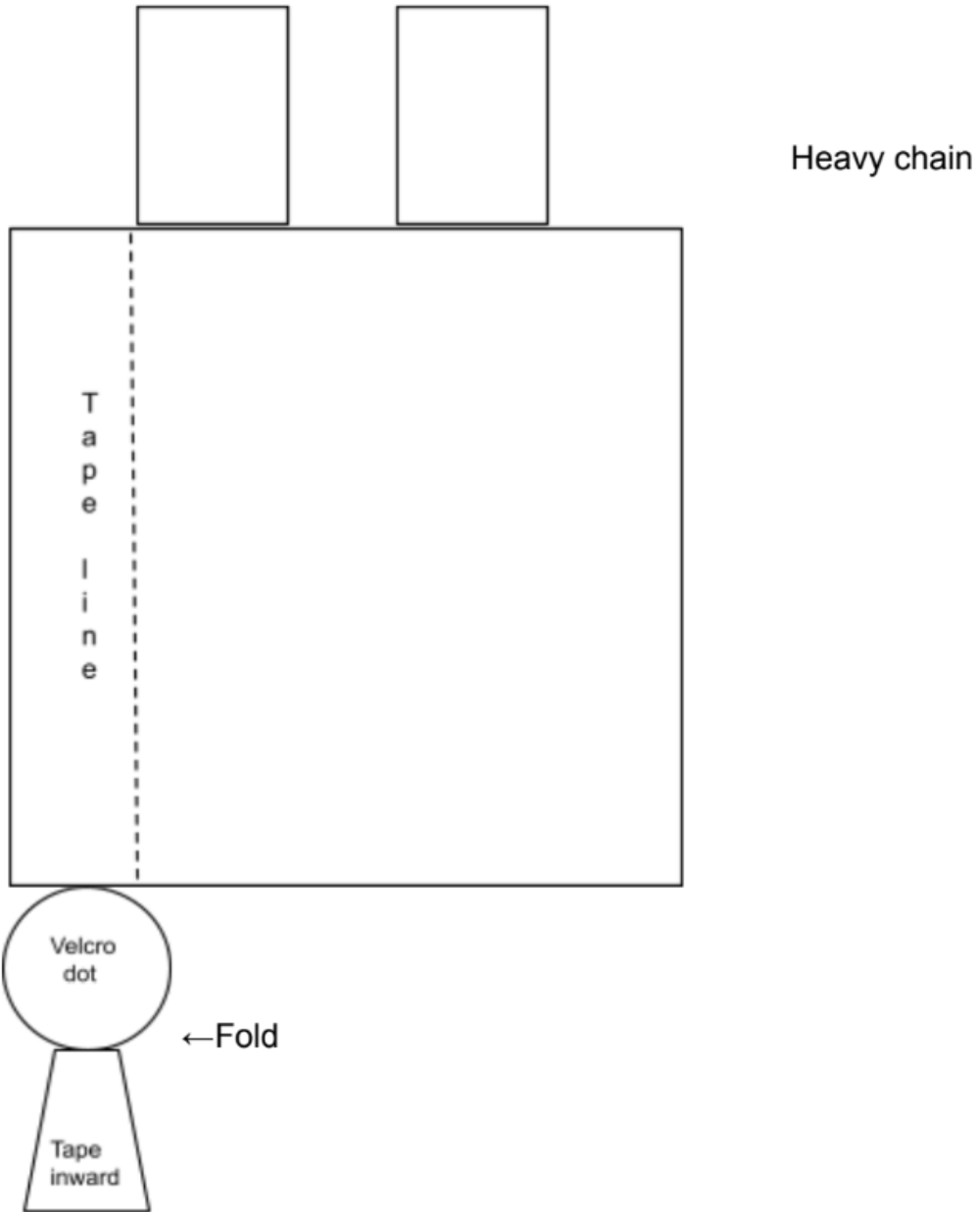
Name:

Date:

Class:

ELISA Templates

Modeling an Enzyme-Linked Immunosorbent Assay Templates



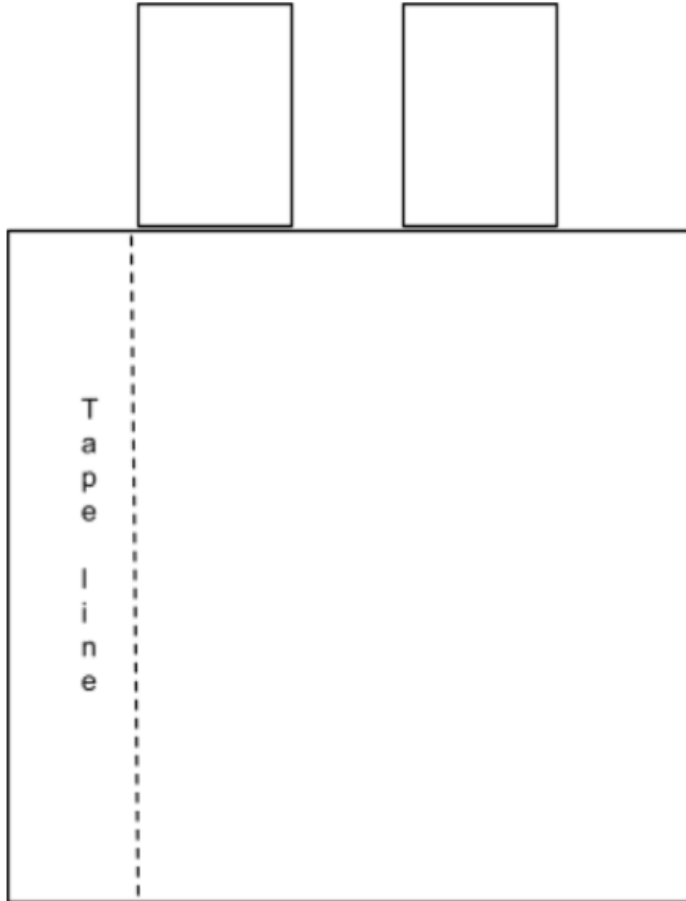
Heavy chain, Primary antibody

Name:

Date:

Class:

Secondary Antibody



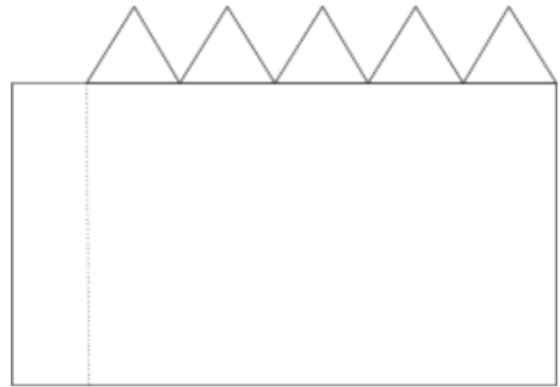
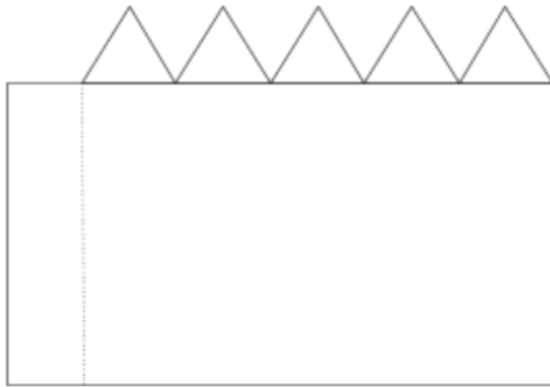
Print in a different color

Name:

Date:

Class:

Light Chains



Print twice for two antibodies: Two in the same color as the primary antibody, and two in the same color as the secondary antibody.

Name:

Date:

Class:

ENZYMES: Print Enzymes on color changing paper. Cut dash lines on the enzymes to fit in the heavy chain of secondary antibodies.

